

t-fit.org

**T-FIT®**  
INSULATION  
**Fit** to perform. **Fit** to last

## T-FIT® Clean

Modular cleanroom insulation

Moulded from Zotefoams ZOTEK® F high-performance PVDF foam, T-FIT Clean is the leading insulation tailored for clean room environments in pharmaceutical, semiconductor and highly controlled production industries.



A  Zotefoams plc brand

**T-FIT® Clean insulation** is the leading choice in cleanroom and highly controlled manufacturing environments due to its fire-retardant properties and resistance to moisture and fungal growth. It consistently outperforms competitors and is **the only insulation solution that meets internationally recognised cleanroom standards.**





## What makes T-FIT Clean unique?

### Advanced Technology



T-FIT® Insulation inherits the unique properties built into Zotefoams close cell foams. Particulate-, dust-, fibre-free and almost zero VOCs, inherently hydrophobic and highly resistant to fungal and mould growth providing exceptional performance in any environment.

### Wide Temperature Range



Suitable for both chilled and hot processing applications with an operating range of -80°C to +160°C (effective up to 158°C at 5 bar steam pressure).

### Easy Installation & Maintenance



Designed for fast, tool-free installation, including products that insulate straight runs, elbows, tee's, valves and other typical pipeline equipment, all within an ultra slim 6.35mm profile

### Workforce Friendly



All T-FIT® products provide excellent protection from hot pipework for clothing, skin and equipment.  
No harmful chemicals or particles are given off during installation or throughout the products long term use.

### Leading Fire Safety Credentials



The only foam compliant with the FM4910 Global Cleanroom Materials Protocol. With an ASTM E84 independently tested by UL (to their UL723 certification) rating of 0/0 for surface burning of materials, T-FIT Clean delivers the lowest flame, smoke and toxicity rating of any polymer/ elastomer insulating product.

### Environmentally Friendly



Market leading durability with 10-year refit intervals. Once installed, T-FIT is there to stay. No more regular 'stop-remove-dispose' refits with all the associated waste. Providing a low lifetime cost of ownership.

## Installation made simple

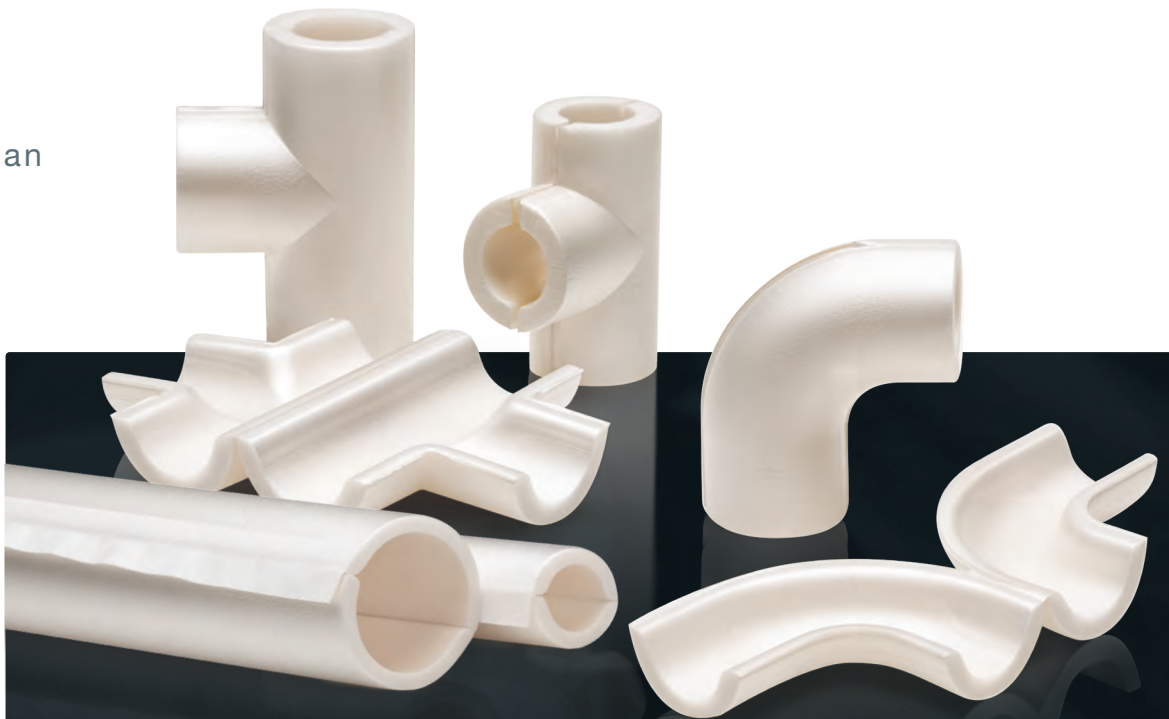
T-FIT Clean Insulation offers a lightweight, flexible insulation solution that is easy to cut and quick to install. This system come with factory-installed closure tape and does not require use of personal protection equipment to install.

The supplied tapes, sealant, and adhesives facilitate the creation of tight, water vapor-resistant joints swiftly and easily, a crucial aspect for low-temperature applications where effective condensation control is imperative.

As a completely insulation solution T-FIT Clean also has a comprehensive range of fabricated insulation boxes to fit frequently used valves and flanges.



**T-FIT** Clean



## FOR THE MOST DEMANDING CLEANROOM AND MANUFACTURING ENVIRONMENTS

T-FIT® Clean insulation is engineered to excel in the harshest cleanroom and manufacturing conditions. With fire-retardant, moisture, and bacteria-resistant properties, it meets the strictest international standards. From -80°C to +160°C, T-FIT Clean handles both chilled and hot processing applications with ease. Its ultra-slim profile ensures high performance even in tight spaces, while its robust design guarantees fast, tool-free installation and long maintenance-free service life.

T-FIT® Clean offers the lowest flame, smoke, and toxicity ratings of any polymer/elastomer insulation. Trust T-FIT® Clean for the cleanest, safest, and most cost-effective insulation solution available for a long maintenance free service life.





Pre-fabricated and custom insulation for every application



90 Degree Elbow



Clean Tee



Clean Reducer



Flange/Valve Box



Straight










Unequal Tee

## Product Specification

T-FIT® Clean is manufactured from Zotefoams ZOTEK® F PVDF closed cell foam, the only foam product to be specification tested to FM4910 Clean Room Materials Protocol. The values provided in this brochure represent data gathered from random samples of our production of ZOTEK F PVDF from which T-FIT Clean is produced. These are given to the best of our knowledge and should be considered as guidance only for selecting a suitable grade for a given application.

### Typical Values

Property	Test Standard	Typical Value
<b>Material</b>	Manufactured from an FDA-compliant resin	
 <b>Service Temperature</b>	*See Notes Below	-80 °C to +160 °C (-112 °F to + 320 °F)
 <b>Thermal Conductivity</b>	ISO 8301	Mean temperature of 0 °C (32 °F)
Mean temperature of 25 °C (77 °F)		0.031 W/m.K (0.22 Btu.in/h.ft2 °F)
Mean temperature of 80 °C (176 °F)		0.034 W/m.K (0.24 Btu.in/h.ft2 °F)
		0.042 W/m.K (0.29 Btu.in/h.ft2 °F)
 <b>Fire Testing</b>	EN13501-1	B - s1, d0
Euroclass	Thickness: 6.35mm	
UL723 / ASTM E84	Material Thickness	0.27"
	Flaming Spread Index	0
	Smoke Developed Index	10
AS 1530	Gauge mm	Ignitability
	6.35	0
	12.7	0
		Spread of flame
		0
		Heat Evolved
		0
		Smoke Dev
		1
		0 -1
 <b>Water Vapour Transmission</b>	ISO 1663:2007(E)	8750 µ Value
 <b>Outgassing</b>	VDI 2083-P17	44.18µg/g
ISO-AMC class	ISO 14644-8**	-8.5
 <b>Fungus Resistance</b>	ASTM G21-15	Full test complete No signs after 28 days
 <b>Leachable Ions</b>	ASTM C-871	Pass
 <b>Factory Mutual 4910 Cleanroom Materials Flammability Test Protocol</b>	Specification tested	

\* This information is based on internal testing and represents peak temperatures only. For continuous use or advice on product specification with respect to condensation control or temperatures below -80°C, please contact your local T-FIT® representative.

\*\* Based on independent testing and commentary, full report available on request.





## T-FIT® Clean

Modular cleanroom insulation

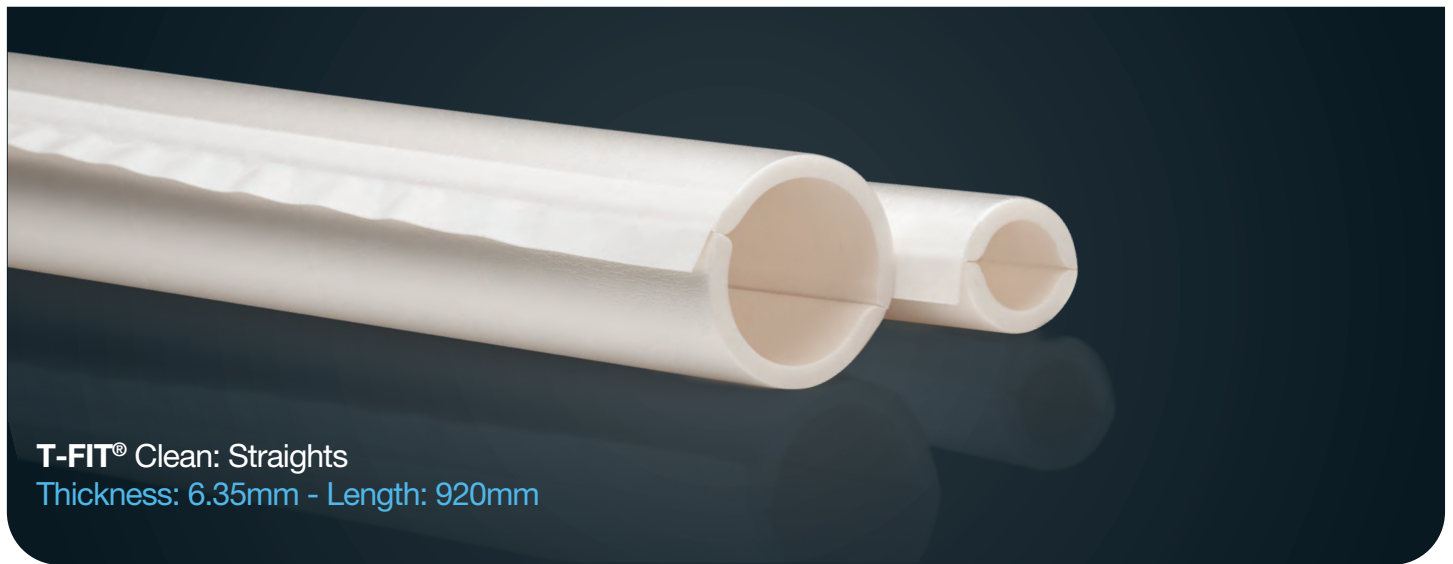
## Product Range



Developed for the most  
demanding environments







**T-FIT® Clean: Straights**  
 Thickness: 6.35mm - Length: 920mm

Product Code		Compatible with Pipe outer diameter		Product Code		Compatible with Pipe outer diameter	
		inches	mm			inches	mm
With tape				No tape			
<b>ZAFCK99930</b>	ASME BPE	0.25	6.35	<b>ZAFCK99930-NT</b>	ASME BPE	0.25"	6.35
<b>ZAFCK06381</b>	ASME BPE	0.375	9.53	<b>ZAFCK06381-NT</b>	ASME BPE	0.375"	9.53
<b>ZAFCK06382</b>	ASME BPE	0.5	12.70	<b>ZAFCK06382-NT</b>	ASME BPE	0.5"	12.70
<b>ZAFCK06383</b>	ASME BPE	0.75	19.05	<b>ZAFCK06383-NT</b>	ASME BPE	0.75"	19.05
<b>ZAFCK06384</b>	ASME BPE	1.0	25.40	<b>ZAFCK06384-NT</b>	ASME BPE	1.0"	25.40
<b>ZAFCK06385</b>	ASME BPE	1.5"	38.10	<b>ZAFCK06385-NT</b>	ASME BPE	1.5"	38.10
<b>ZAFCK06386</b>	ASME BPE	2.0"	50.80	<b>ZAFCK06386-NT</b>	ASME BPE	2.0"	50.80
<b>ZAFCK06387</b>	ASME BPE	2.5"	63.50	<b>ZAFCK06387-NT</b>	ASME BPE	2.5"	63.50
<b>ZAFCK06388</b>	ASME BPE	3.0"	76.20	<b>ZAFCK06388-NT</b>	ASME BPE	3.0"	76.20
<b>ZAFCK06787</b>	ASME BPE	3.5"	88.90	<b>ZAFCK06522-NT</b>	ASME BPE)	4.0"	101.60
<b>ZAFCK06522</b>	ASME BPE	4.0"	101.60				
With tape				No tape			
<b>ZAFCK06381-D</b>	DIN 11850	DN8	10.00	<b>ZAFCK06381-D-NT</b>	DIN 11850	DN8	10.00
<b>ZAFCK06382-D</b>	DIN 11850	DN10	13.00	<b>ZAFCK06382-D-NT</b>	DIN 11850	DN10	13.00
<b>ZAFCK06383-D</b>	DIN 11850	DN15	19.00	<b>ZAFCK06383-D-NT</b>	DIN 11850	DN15	19.00
<b>ZAFCK06888</b>	DIN 11850	DN20	23.00	<b>ZAFCK06888-NT</b>	DIN 11850	DN20	23.00
<b>ZAFCK06889</b>	DIN 11850	DN25	29.00	<b>ZAFCK06889-NT</b>	DIN 11850	DN25	29.00
<b>ZAFCK06890</b>	DIN 11850	DN32	35.00	<b>ZAFCK06890-NT</b>	DIN 11850	DN32	35.00
<b>ZAFCK06503-D</b>	DIN 11850	DN40	41.00	<b>ZAFCK06503-D-NT</b>	DIN 11850	DN32	35.00
<b>ZAFCK06891</b>	DIN 11850	DN50	53.00	<b>ZAFCK06891-NT</b>	DIN 11850	DN50	53.00
<b>ZAFCK06297</b>	DIN 11850	DN65	70.00	<b>ZAFCK06297-NT</b>	DIN 11850	DN65	70.00
<b>ZAFCK06892</b>	DIN 11850	DN80	85.00	<b>ZAFCK06892-NT</b>	DIN 11850	DN80	85.00
<b>ZAFCK06893</b>	DIN 11850	DN100	104.00				
With tape				No tape			
<b>ZAFCK06381-EU</b>	ISO 1127	DN 6	10.20	<b>ZAFCK06381-EU-NT</b>	ISO 1127	DN6	10.20
<b>ZAFCK06382-EU</b>	ISO 1127	DN 8	13.50	<b>ZAFCK06382-EU-NT</b>	ISO 1127	DN8	13.50
<b>ZAFCK06500</b>	ISO 1127	DN 10	17.20	<b>ZAFCK06500-NT</b>	ISO 1127	DN10	17.20
<b>ZAFCK06501</b>	ISO 1127	DN 15	21.30	<b>ZAFCK06501-NT</b>	ISO 1127	DN15	21.30
<b>ZAFCK06502</b>	ISO 1127	DN 20	26.90	<b>ZAFCK06502-NT</b>	ISO 1127	DN20	26.90
<b>ZAFCK06457</b>	ISO 1127	DN25	33.70	<b>ZAFCK06457-NT</b>	ISO 1127	DN25	33.70
<b>ZAFCK06503</b>	ISO 1127	DN32	42.40	<b>ZAFCK06503-NT</b>	ISO 1127	DN32	42.40
<b>ZAFCK06564</b>	ISO 1127	DN40	48.30	<b>ZAFCK06564-NT</b>	ISO 1127	DN40	48.30
<b>ZAFCK06835</b>	ISO 1127	DN50	60.30	<b>ZAFCK06835-NT</b>	ISO 1127	DN50	60.30
<b>ZAFCK06388-EU</b>	ISO 1127	DN65	76.10	<b>ZAFCK06388-EU-NT</b>	ISO 1127	DN65	76.10
<b>ZAFCK06525</b>	ISO 1127	DN80	88.90	<b>ZAFCK06525-NT</b>	ISO 1127	DN80	88.90



**T-FIT® Clean: Elbows**  
Thickness: 6.35mm



**T-FIT® Clean: Tees**  
Thickness: 6.35mm

Product Code		Compatible with Pipe outer diameter		Product Code		Compatible with Pipe outer diameter	
		inches	mm			inches	mm
<b>ZAFCK05880</b>	ASME BPE	0.375"	9.53	<b>ZAFCK05900</b>	ASME BPE	0.375"	9.53
<b>ZAFCK05814</b>	ASME BPE	0.5"	12.70	<b>ZAFCK05743</b>	ASME BPE	0.5"	12.70
<b>ZAFCK05815</b>	ASME BPE	0.75"	19.05	<b>ZAFCK05744</b>	ASME BPE	0.75"	19.05
<b>ZAFCK05816</b>	ASME BPE	1.0	25.40	<b>ZAFCK05745</b>	ASME BPE	1.0"	25.40
<b>ZAFCK05615</b>	ASME BPE	1.5"	38.10	<b>ZAFCK05746</b>	ASME BPE	1.5"	38.10
<b>ZAFCK05616</b>	ASME BPE	2.0"	50.80	<b>ZAFCK05747</b>	ASME BPE	2.0"	50.80
<b>ZAFCK05898</b>	ASME BPE	2.5"	63.50	<b>ZAFCK05901</b>	ASME BPE	2.5"	63.50
<b>ZAFCK05899</b>	ASME BPE	3.0"	76.20	<b>ZAFCK05902</b>	ASME BPE	3.0"	76.20
<b>ZAFCK06878</b>	ASME BPE	3.5"	88.90				
<b>ZAFCK06523</b>	ASME BPE	4.0"	101.60				
<b>ZAFCK05880-EU</b>	ISO 1127	DN6	10.20	<b>ZAFCK05900-EU</b>	ISO 1127	DN6	10.20
<b>ZAFCK05814-EU</b>	ISO 1127	DN8	13.50	<b>ZAFCK05743-EU</b>	ISO 1127	DN8	13.50
<b>ZAFCK06512</b>	ISO 1127	DN10	17.20	<b>ZAFCK06506</b>	ISO 1127	DN10	17.20
<b>ZAFCK06513</b>	ISO 1127	DN15	21.30	<b>ZAFCK06507</b>	ISO 1127	DN15	21.30
<b>ZAFCK06582</b>	ISO 1127	DN20	26.90	<b>ZAFCK06583</b>	ISO 1127	DN20	26.90
<b>ZAFCK06515</b>	ISO 1127	DN25	33.70	<b>ZAFCK06508</b>	ISO 1127	DN25	33.70
<b>ZAFCK06516</b>	ISO 1127	DN32	42.40	<b>ZAFCK06509</b>	ISO 1127	DN32	42.40
<b>ZAFCK06517</b>	ISO 1127	DN40	48.30	<b>ZAFCK06510</b>	ISO 1127	DN40	48.30
<b>ZAFCK06518</b>	ISO 1127	DN50	60.30	<b>ZAFCK06511</b>	ISO 1127	DN50	60.30
<b>ZAFCK05899-EU</b>	ISO 1127	DN65	76.10	<b>ZAFCK05902-EU</b>	ISO 1127	DN65	76.10
<b>ZAFCK06816</b>	ISO1127	DN80	88.90				
<b>ZAFCK05880-D</b>	DIN 11850	DN8	10.00	<b>ZAFCK05743-D</b>	DIN 11850	DN10	13.00
<b>ZAFCK05814-D</b>	DIN 11850	DN10	13.00	<b>ZAFCK05744-D</b>	DIN 11850	DN15	19.00
<b>ZAFCK05815-D</b>	DIN 11850	DN15	19.00	<b>ZAFCK06509-D</b>	DIN 11850	DN40	41.00
<b>ZAFCK06874</b>	DIN 11850	DN20	23.00	<b>ZAFCK05900-D</b>	DIN 11850	DN8	10.00
<b>ZAFCK06875</b>	DIN 11850	DN25	29.00	<b>ZAFCK06879</b>	DIN 11850	DN20	23.00
<b>ZAFCK06876</b>	DIN 11850	DN32	35.00	<b>ZAFCK06880</b>	DIN 11850	DN25	29.00
<b>ZAFCK06516-D</b>	DIN 11850	DN40	41.00	<b>ZAFCK06881</b>	DIN 11850	DN32	35.00
<b>ZAFCK06877</b>	DIN 11850	DN50	53.00	<b>ZAFCK06882</b>	DIN 11850	DN50	53.00
<b>ZAFCK05238</b>	DIN 11850	DN65	70.00	<b>ZAFCK06883</b>	DIN 11850	DN65	70.00
<b>ZAFCK06878-D</b>	DIN 11850	DN80	85.00				





For the cleanest, safest, and most cost-effective insulation, choose **T-FIT®** Clean



### Zotefoams plc

675 Mitcham Road, Croydon, Surrey  
CR9 3AL, United Kingdom  
Tel: +44 (0) 20 8664 1600  
Email: [t-fitsales@zotefoams.com](mailto:t-fitsales@zotefoams.com)

### T-FIT Insulation Solutions India Private Limited

810 Shapath V, S.G. Highway  
Ahmedabad, Gujarat, 380015  
Tel: +91 9979867725  
Email: [t-fitindia@zotefoams.com](mailto:t-fitindia@zotefoams.com)

### Zotefoams T-FIT Material Technology (Kunshan) Co., Ltd

181 Huanlou Road, Development Zone,  
Kunshan City, Jiangsu Pr. China 215333  
Tel: +86 (0) 512 5012 6001-8001  
Email: [t-fitchina@zotefoams.com](mailto:t-fitchina@zotefoams.com)

### Zotefoams Inc.

55 Precision Drive  
Walton KY, 41094 USA  
Tel: +1 (0) 859 371 4025  
Free: (800) 362-8358 (US Only)  
Email: [t-fitusa@zotefoams.com](mailto:t-fitusa@zotefoams.com)

Zotefoams plc Management systems  
are covered by the following:



Quality  
FM 01570  
ISO 9001:2015



Safety  
OHS 52538  
ISO 45001: 2018



Environment  
EMS 36270  
ISO 14001:2015

### Exclusion of Liability

Any information contained in this document is, to the best of the knowledge and belief of Zotefoams plc and of Zotefoams Inc. (together herein referred to as ZOTEFOAMS), accurate. Any liability on the part of ZOTEFOAMS or any subsidiary or holding company of ZOTEFOAMS for any loss, damage, costs or expenses directly or indirectly arising out of the use of such information or the use, application, adaptation or processing of any goods, materials or products described herein is, save as provided in ZOTEFOAMS' conditions of sale ("Conditions of Sale"), hereby excluded to the fullest extent permitted by law.

Where ZOTEFOAMS' goods or materials are to be used in conjunction with other goods or materials, it is the responsibility of the user to obtain from the manufacturers or suppliers of the other goods or materials all technical data and other properties relating to those other goods or materials. Save as provided in the Conditions of Sale no liability can be accepted in respect of the use of ZOTEFOAMS' goods or materials in conjunction with any other goods or materials.

Where ZOTEFOAMS' goods or materials are likely to come into contact with foodstuffs or pharmaceuticals, whether directly or indirectly, or are likely to be used in the manufacture of toys, prior written confirmation of compliance with relevant legislative or regulatory standards for those applications may be requested from ZOTEFOAMS, if appropriate. Save as provided in the Conditions of Sale no liability can be accepted for any damage, loss or injury directly or indirectly arising out of any failure by the user to obtain such confirmation or to observe any recommendations given by or on behalf of ZOTEFOAMS.

ZOTEFOAMS MAKES NO WARRANTIES EXPRESS OR IMPLIED, EXCEPT TO THE EXTENT SET OUT IN THE CONDITIONS OF SALE, AND HEREBY SPECIFICALLY EXCLUDES ANY IMPLIED WARRANTY OF MERCHANTABILITY OR FITNESS FOR A PARTICULAR PURPOSE WITH RESPECT TO ANY GOODS, MATERIALS OR PRODUCTS DESCRIBED HEREIN.

The only insulation  
solution that meets  
internationally recognised  
cleanroom standards

T-FIT<sup>®</sup>  
INSULATION

Contact us

[t-fitsales@zotefoams.com](mailto:t-fitsales@zotefoams.com)



[t-fit.org](http://t-fit.org)



T-FIT<sup>®</sup> and ZOTEK<sup>®</sup> are registered trademarks of Zotefoams plc.  
All rights reserved. Issue 2 August 2025 Revision 1



LinkedIn