



Sustainable Insulation

T-FIT<sup>®</sup>

INSULATION

**Fit** to perform. **Fit** to last



Unrivalled performance and minimal maintenance, year after year of a class-leading service life, make T-FIT<sup>®</sup> the most cost-effective pipe insulation solution for plant-wide installation in demanding, highly-controlled industrial, pharma and manufacturing environments.



ZOTEFOAMS

# Zotefoams approach

Zotefoams considers that managing ESG (Environmental, social and governance) impacts contributes to long-term value creation, supports resilience, and helps safeguard the business's future in an evolving business environment.

The sustainability approach adopted by Zotefoams is centred on the twin principles of:

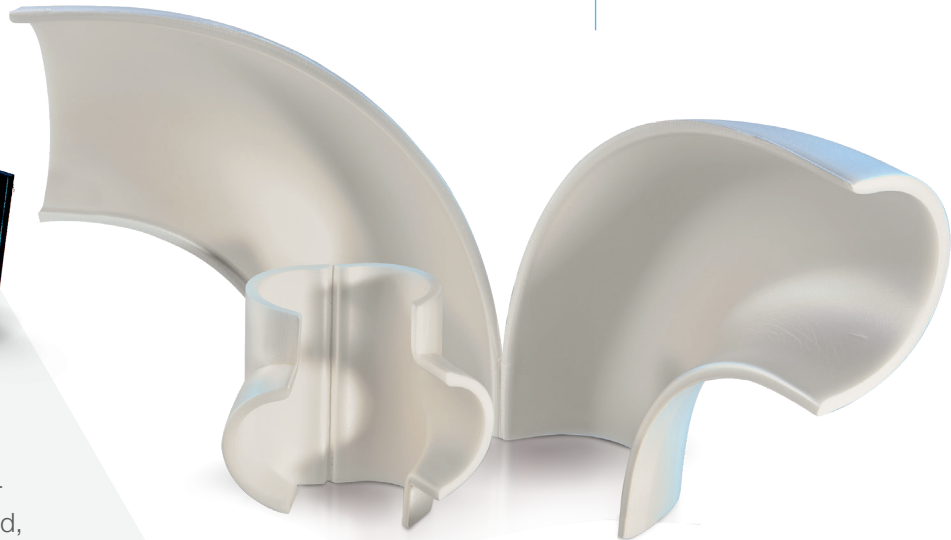
- i) operating in markets where Zotefoams' products offer unique sustainability advantages which benefit society
- ii) minimising the use of natural resources through a series of internal measures.

The essential ingredient driving T-FIT product performance/longevity is the cellular closed cell foam from which T-FIT is moulded, manufactured by mother company Zotefoams plc. Using a propriety unique high pressure gassing process, Zotefoams produce exceptionally pure closed cell foams from a range of polymers including PVDF (Polyvinylidene fluoride). T-FIT insulation products are moulded from Zotefoams foam materials in a simple secondary process.

Discussions around sustainability and longevity of T-FIT must start with understanding the Zotefoams approach to sustainability, who provide the unique material that drives T-FIT's superior product performance and longevity.

T-FIT® Clean

T-FIT® Hygiene



The first point precisely matches T-FIT's ambition to supply a range of unique insulation products that reduce energy consumption, with longevity that ensures extended service life. Addressing the second point, T-FIT are actively developing products that are produced from production waste.



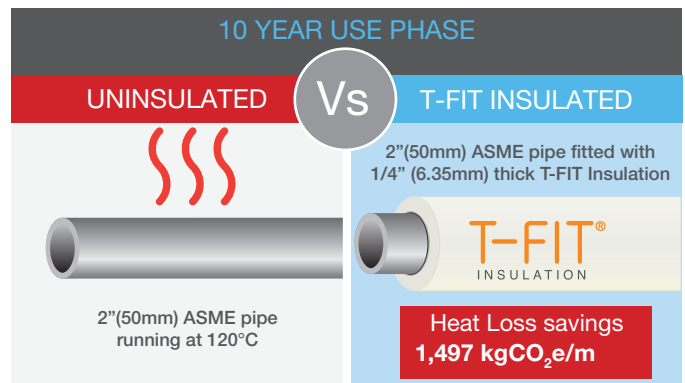
# to sustainability

## Carbon footprint

T-FIT products are typically installed around hot pipework to reduce heat loss that would otherwise occur if insulation was not installed.

A review of energy consumption during manufacture of T-FIT compared to energy savings offered by the product in use show a remarkable difference between the two metrics.

Taking a 2"/50mm ASME pipe running at 120°C over a 10-year period as "use phase", the approximate reduction in heat loss compared to a bare, uninsulated pipe is equivalent to ~1,497 kgCO<sub>2</sub>e per meter of insulated pipe.

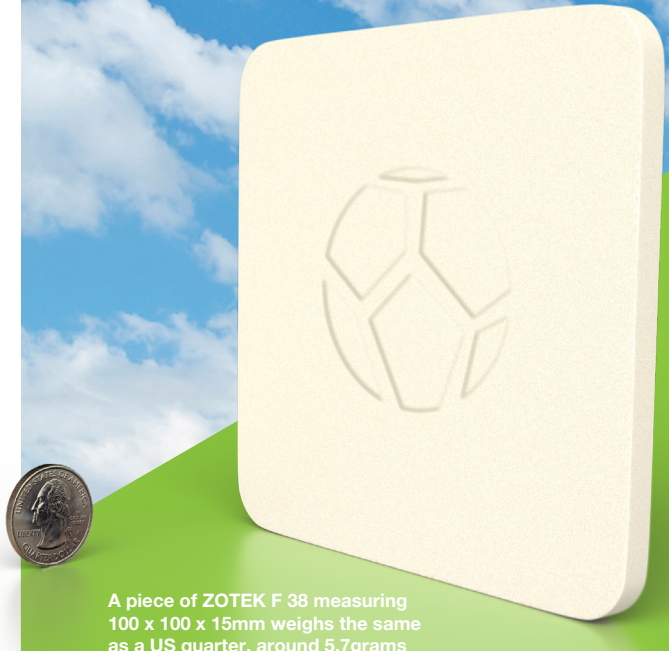


Approximate total energy use in production of raw materials, foam gassing/production, and moulding etc, is equivalent to ~6.5 kgCO<sub>2</sub>e/m

The comparative data above shows very clearly how T-FIT contributes to reduction in energy consumption and carbon footprint. Over a 10-year service life, the energy saving in the use-phase comfortably offsets the carbon footprint of manufacturing by an estimated 1,490 kgCO<sub>2</sub>e per meter of insulation.



*"A natural and logical step towards helping society reduce energy consumption"*



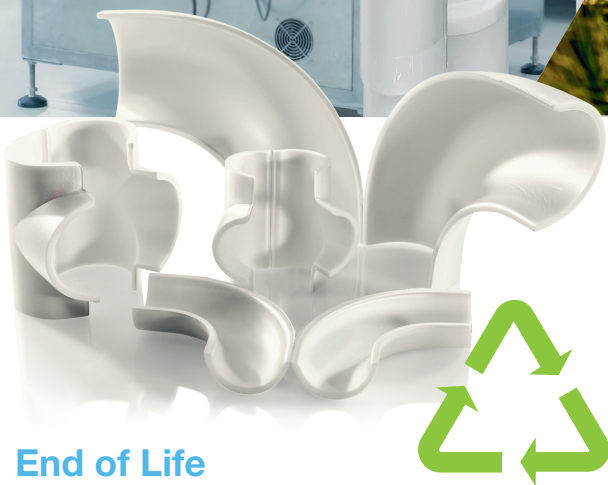
A piece of ZOTEK F 38 measuring 100 x 100 x 15mm weighs the same as a US quarter, around 5.7grams

## Sustainability opportunities

Over the past century, materials manufactured using Zotefoams' unique three-stage process have been designed into products which have saved energy by virtue of their insulating properties, have reduced the carbon emissions of cars, planes and trains by reducing weight which in turn lowers fuel consumption, have lasted longer than other comparable solutions and have been used to protect both people and products. These opportunities still exist today and the choice of Zotefoams materials is increasingly based on sustainability considerations.

Leveraging Zotefoams unique gassing technology to make high performance insulation products with outstanding longevity is a natural and logical step towards helping society reduce energy consumption.

With the above on mind, T-FIT products meet the SASB (Sustainability Accounting Standards Board) concept for use-phase resource efficiency, as through use, T-FIT insulation can be shown to improve energy efficiency, eliminate or lower greenhouse gas (GHG) emissions, & reduce raw materials consumption



## End of Life

The nature of T-FIT, being moulded from a foamed polymer means the product excels in terms of longevity. The closed cell construction of the foam prevents the ingress of moisture, the common root cause for insulation failure.

Superior longevity of T-FIT when compared to conventional insulation products reduces overall waste and downtime. The low profile nature of T-FIT allows for space savings around pipe runs, and facilitates installation even in confined, difficult to manage type spaces.

The product is easy to remove and replace under any repair and maintenance requirements of pipeline equipment. Specialist equipment or PPE is not required as the product does not create any particulates or dust, or impact in any way the environment, even after protracted service life.

At the end of use, T-FIT can be removed and depending on the original conditions of use, re-installed and re-used.

The product can also contribute to various re-cycled materials and initiatives currently under investigation by Zotefoams.

## Third party assessment

In 2022, Zotefoams made a first report to CDP, a not-for-profit charity that runs a global disclosure system for investors, companies, cities, states and regions to manage their environmental impacts. The Zotefoams report may be found on its website: [www.cdp.net/en](http://www.cdp.net/en)

In early 2023, Zotefoams was also upgraded from an A score to an AA score by MSCI and was awarded a 'green flag' (the lowest risk rating) as it has no ESG controversies. MSCI ESG Research provides MSCI ESG Ratings on global public and a few private companies on a scale of AAA (leader) to CCC (laggard), according to exposure to industry-specific ESG risks and the ability to manage those risks relative to peers. Further details may be found on its website: [www.msci.com](http://www.msci.com)

The Company is certified to accredited standard ISO 45001:2018 for Health and Safety, ISO 14001:2015 for Environmental Management Systems and ISO 9001:2015 for Quality Management and is subject to a recertification regime requiring two surveillance audits per annum.

During a recent recertification, one auditor commended Zotefoams' willingness to continually improve and advised that the very small number of minor non-conformities raised in the previous three years was an excellent result.

T-FIT product performance is independently verified by both FM (Factory Mutual) and UL Solutions (Underwriter Laboratories).

### Zotefoams plc

675 Mitcham Road  
Croydon, Surrey  
CR9 3AL, United Kingdom  
Tel: +44 (0) 20 8664 1600  
Email: [t-fitsales@zotefoams.com](mailto:t-fitsales@zotefoams.com)

### T-FIT Insulation Solutions India Private Limited

810 Shapath V, S.G. Highway  
Ahmedabad, Gujarat, 380015  
Tel: +91 (0) 7433946464  
Email: [t-fitindia@zotefoams.com](mailto:t-fitindia@zotefoams.com)

### Zotefoams T-FIT Material Technology (Kunshan) Co., Ltd

181 Huanlou Road, Development Zone,  
Kunshan City, Jiangsu Pr. China 215333  
Tel: +86 (0) 512 5012 6001-8001  
Email: [t-fitchina@zotefoams.com](mailto:t-fitchina@zotefoams.com)

### Zotefoams Inc.

55 Precision Drive  
Walton KY, 41094 USA  
Tel: +1 (0) 859 371 4025  
Free: (800) 362-8358 (US Only)  
Email: [t-fitusa@zotefoams.com](mailto:t-fitusa@zotefoams.com)