

T-FIT[®] Hygiene

T-FIT[®]

INSULATION

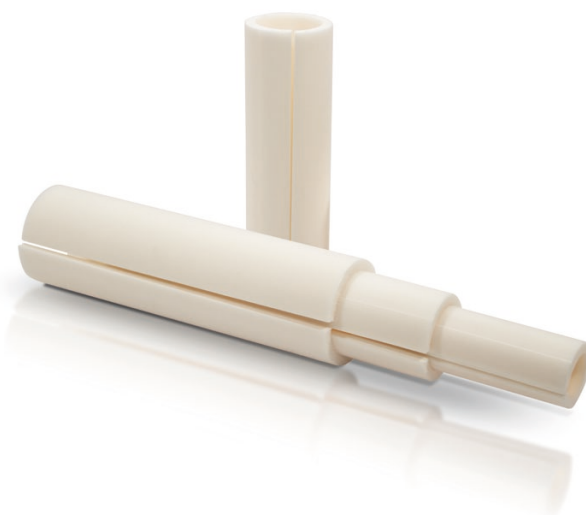
Fit to perform. **Fit** to last

Product information

Typical Values

T-FIT[®] Hygiene is manufactured from Zotefoams ZOTEK[®] F43 HT closed cell PVDF foam.

The values provided in this Product Information Sheet represent data gathered from random samples of our production of ZOTEK[®] F43 from which T-FIT Hygiene is produced and represent typical data. These are given to the best of our knowledge and should be considered as guidance only for selecting a suitable grade for a given application.



Property	Test Standard	Typical Value
Material		Manufactured from an FDA-compliant resin
Service Temperature	See Notes Below*	-80 °C to +145 °C (-112 °F to +293 °F)
Thermal Conductivity		
Mean temperature of 25 °C (77 F)		0.034 W/m.K (0.24 Btu.in/h.ft ² °F)
Mean temperature of 50 °C (122 F)	ISO 8301	0.037 W/m.K (0.26 Btu.in/h.ft ² °F)
Mean temperature of 80 °C (176 F)		0.040 W/m.K (0.28 Btu.in/h.ft ² °F)
Fire Certification		
Euroclass	EN13501-1	B — s1,d0
AS 1530	Gauge mm Ignitability Spread of flame Heat Evolved Smoke Dev	
	5 0 0 0 1	
	25 0 0 0 1	
Water Vapour Transmission	ISO 1663	7250, μ Value
Leachable Ions	ASTM C-871	Pass
Fungus Resistance	ASTM G21-15	Full test complete No signs after 28 days

* These are extreme temperatures. For continuous use or advice on product specification with respect to condensation control or temperatures below -80°C, please contact your local T-FIT[®] representative. Report available on request.

** Based on independent testing and commentary, full report available on request.

Product Code	Description: T-FIT Hygiene, Straight Tubes	Standard	Insulation in	Sizing mm
TFHS012A06U000-9001	ASME BPE 0.5" OD 12.7MM T-FIT Hygiene Insulating Straight 6.35mm THK	ASME BPE	0.5"	12.70
TFHS019A06U000-9002	ASME BPE 0.75" OD 19.0MM T-FIT Hygiene Insulating Straight 6.35mm THK	ASME BPE	0.75"	19.00
TFHS025A12U000-9003	ASME BPE 1.0" OD 25.40mm T-FIT Hygiene Insulating Straight 12.70mm THK	ASME BPE	1.0"	25.40
TFHS025A06U000-9003	ASME BPE 1.0" OD 25.40mm T-FIT Hygiene Insulating Straight 6.35mm THK	ASME BPE	1.0"	25.40
TFHS038A12U000-9004	ASME BPE 1.5" OD 38.10mm T-FIT Hygiene Insulating Straight 12.70mm THK	ASME BPE	1.5"	38.10
TFHS038A06U000-9004	ASME BPE 1.5" OD 38.10mm T-FIT Hygiene Insulating Straight 6.35mm THK	ASME BPE	1.5"	38.10
TFHS050A12U000-9005	ASME BPE 2.0" OD 50.80mm T-FIT Hygiene Insulating Straight 12.70mm THK	ASME BPE	2.0"	50.80
TFHS050A06U000-9005	ASME BPE 2.0" OD 50.80mm T-FIT Hygiene Insulating Straight 6.35mm THK	ASME BPE	2.0"	50.80
TFHS063A12U000-9006	ASME BPE 2.5" OD 63.50mm T-FIT Hygiene Insulating Straight 12.70mm THK	ASME BPE	2.5"	63.50
TFHS063A06U000-9006	ASME BPE 2.5" OD 63.50mm T-FIT Hygiene Insulating Straight 6.35mm THK	ASME BPE	2.5"	63.50
TFHS076A12U000-9007	ASME BPE 3.0" OD 76.20mm T-FIT Hygiene Insulating Straight 12.70mm THK	ASME BPE	3.0"	76.20
TFHS076A06U000-9007	ASME BPE 3.0" OD 76.20mm T-FIT Hygiene Insulating Straight 6.35mm THK	ASME BPE	3.0"	76.20
TFHS101A12U000-9008	ASME BPE 4.0" OD 101.60mm T-FIT Hygiene Insulating Straight 12.70mm THK	ASME BPE	4.0"	101.60
TFHS101A06U000-9008	ASME BPE 4.0" OD 101.60mm T-FIT Hygiene Insulating Straight 6.35mm THK	ASME BPE	4.0"	101.60
TFHS021I06U000-9009	ISO 1127 DN15 OD 21.3mm T-FIT Hygiene Insulating Straight 6.35mm THK	ISO 1127	DN15	21.30
TFHS026I06U000-9010	ISO 1127 DN20 OD 26.9mm T-FIT Hygiene Insulating Straight 6.35mm THK	ISO 1127	DN20	26.90
TFHS033I06U000-9011	ISO 1127 DN25 OD 33.7mm T-FIT Hygiene Insulating Straight 6.35mm THK	ISO 1127	DN25	33.70
TFHS048I06U000-9012	ISO 1127 DN40 OD 48.3mm T-FIT Hygiene Insulating Straight 6.35mm THK	ISO 1127	DN40	48.30
TFHS060I06U000-9013	ISO 1127 DN50 OD 60.3mm T-FIT Hygiene Insulating Straight 6.35mm THK	ISO 1127	DN50	60.30
TFHS076I06U000-9014	ISO 1127 DN65 OD 76.1mm T-FIT Hygiene Insulating Straight 6.35mm THK	ISO 1127	DN65	76.10
TFHS088I06U000-9015	ISO 1127 DN80 OD 88.9mm T-FIT Hygiene Insulating Straight 6.35mm THK	ISO 1127	DN80	88.90
TFHS114I06U000-9016	ISO 1127 DN100 OD 114.3mm T-FIT Hygiene Insulating Straight 6.35mm THK	ISO 1127	DN100	114.30
TFHS042I06U000-9017	ISO 1127 DN32 OD 42.4mm T-FIT Hygiene Insulating Straight 6.35mm THK	ISO 1127	DN32	42.40
TFHS023D06U000-9004	DIN 11850 DN20 OD 23.00mm T-FIT Hygiene Insulating Straight 6.35mm THK	DIN 11850	DN20	23.00
TFHS029D06U000-9005	DIN 11850 DN25 OD 29.00mm T-FIT Hygiene Insulating Straight 6.35mm THK	DIN 11850	DN25	29.00
TFHS035D06U000-9006	DIN 11850 DN32 OD 35.00mm T-FIT Hygiene Insulating Straight 6.35mm THK	DIN 11850	DN32	35.00
TFHS041D06U000-9007	DIN 11850 DN40 OD 41.00mm T-FIT Hygiene Insulating Straight 6.35mm THK	DIN 11850	DN40	41.00
TFHS053D06U000-9008	DIN 11850 DN50 OD 53.00mm T-FIT Hygiene Insulating Straight 6.35mm THK	DIN 11850	DN50	53.00
TFHS070D06U000-9009	DIN 11850 DN65 OD 70.00mm T-FIT Hygiene Insulating Straight 6.35mm THK	DIN 11850	DN65	70.00
TFHS085D12U000-9010	DIN 11850 DN80 OD 85.00mm T-FIT Hygiene Insulating Straight 6.35mm THK	DIN 11850	DN80	85.00
TFHS104D06U000-9011	DIN 11850 DN100 OD 104.00mm T-FIT Hygiene Insulating Straight 6.35mm THK	DIN 11850	DN100	104.00

Exclusion of Liability

Any information contained in this document is, to the best of the knowledge and belief of Zotefoams plc and of Zotefoams Inc. (together herein referred to as ZOTEFOAMS), accurate. Any liability on the part of ZOTEFOAMS or any subsidiary or holding company of ZOTEFOAMS for any loss, damage, costs or expenses directly or indirectly arising out of the use of such information or the use, application, adaptation or processing of any goods, materials or products described herein is, save as provided in ZOTEFOAMS' conditions of sale ("Conditions of Sale"), hereby excluded to the fullest extent permitted by law. Where ZOTEFOAMS' goods or materials are to be used in conjunction with other goods or materials, it is the responsibility of the user to obtain from the manufacturers or suppliers of the other goods or materials all technical data and other properties relating to those other goods or materials. Save as provided in the Conditions of Sale no liability can be accepted in respect of the use of ZOTEFOAMS' goods or materials in conjunction with any other goods or materials.

Where ZOTEFOAMS' goods or materials are likely to come into contact with foodstuffs or pharmaceuticals, whether directly or indirectly, or are likely to be used in the manufacture of toys, prior written confirmation of compliance with relevant legislative or regulatory standards for those applications may be requested from ZOTEFOAMS, if appropriate. Save as provided in the Conditions of Sale no liability can be accepted for any damage, loss or injury directly or indirectly arising out of any failure by the user to obtain such confirmation or to observe any recommendations given by or on behalf of ZOTEFOAMS.

ZOTEFOAMS MAKES NO WARRANTIES EXPRESS OR IMPLIED, EXCEPT TO THE EXTENT SET OUT IN THE CONDITIONS OF SALE, AND HEREBY SPECIFICALLY EXCLUDES ANY IMPLIED WARRANTY OF MERCHANTABILITY OR FITNESS FOR A PARTICULAR PURPOSE WITH RESPECT TO ANY GOODS, MATERIALS OR PRODUCTS DESCRIBED HEREIN.

Zotefoams plc Management systems are covered by the following:



Zotefoams plc
675 Mitcham Road
Croydon, Surrey
CR9 3AL, United Kingdom
Tel: +44 (0) 20 8664 1600
Email: t-fitsales@zotefoams.com

**T-FIT Insulation Solutions
India Private Limited**
810 Shapath V, S.G. Highway
Ahmedabad, Gujarat, 380015
Tel: +91 (0) 7433946464
Email: t-fitindia@zotefoams.com

**Zotefoams T-FIT Material
Technology (Kunshan) Co., Ltd**
181 Huanlou Road, Development Zone,
Kunshan City, Jiangsu Pr. China 215333
Tel: +86 (0) 512 5012 6001-8001
Email: t-fitchina@zotefoams.com

Zotefoams Inc.
55 Precision Drive
Walton KY, 41094 USA
Tel: +1 (0) 859 371 4025
Free: (800) 362-8358 (US Only)
Email: t-fitusa@zotefoams.com

T-FIT® and ZOTEK®
are registered trademarks
of Zotefoams plc.
All rights reserved.
Issue 1

If you would like more information visit our website t-fit.org

AZOTE® / ZOTEK® / T-FIT® / MuCell®

